


PERSONAL NAVIGATOR



TUESDAY, APRIL 24, 2012

Sunrise: 5:49 a.m. Sunset: 6:31 p.m.
 Evening Attire: Pirate/ Cruise Casual
 All Ashore: Approx. 8:00 a.m.
 All Aboard: 6:30 p.m.
 Tuesday: Partly Cloudy High: 80°F/28°C
 Wednesday: Partly Cloudy High: 78°F/26°C

ST. MAARTEN

Disney Nature chimpanzee



Rating - G

Run Time: 1hr 18mins

WALT DISNEY THEATRE
 Decks 3 & 4, Forward
 6:00 PM & 8:45 PM



Assistance available at the entrance to the Walt Disney Theatre 30 minutes prior to show time.

St. Maarten Port Information

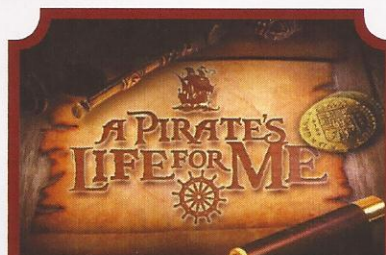
St. Maarten is an island that is peaceably split between France and the Netherlands. Once the site of numerous sugar cane plantations and military strongholds, the West Indies island of St. Maarten/St. Martin today is a popular tourist destination characterized by festive nightlife, local handicrafts, exotic drinks, decadent shopping and gorgeous beaches. The 2 territories occupying the island hold the distinction of being the smallest to exist separately on one sea isle.

When Christopher Columbus stumbled upon this island that would become a major tourist draw centuries later, he named it for Saint Martin of Tours. At the time, it was inhabited by Carib Amerindians, but these natives all but perished in subsequent conflicts over the West Indies by English, Dutch, Danes, French and Spanish forces. As the Spaniards brought African slaves to man their battlements, the French and Dutch brought them to work sugar cane plantations, and as the British imported Chinese and East Indians for labor over the centuries that followed, St. Maarten/St. Martin was gradually populated by a rich mix of diverse peoples.

In March of 1648, the French and the Dutch came to an agreement that divided the island of St. Maarten/St. Martin between them, almost evenly. Three centuries later, a popular tourist trade would explode, resulting in both halves of the island being beautified and developed for vacationers.

DOCKING

The ship docks at the Dr. A C Wathey Cruise and Cargo Facility dock in Phillipsburg, which is located on the Dutch side of the island.



A PIRATE'S LIFE FOR ME

Calling all Pirates, we be! If ye have an adventurous spirit or pirate savvy, come spin the "Wheel of Destiny", for a treasure trove of fun be ripe for the takin' in this action packed pirate game show.

6:30 & 9:45 p.m.
 D Lounge,
 Deck 4, Midship

Don't Miss:

Cruisin' For Trivia

2:45 p.m., D Lounge, Deck 4, Midship
 Test your general knowledge with your Cruise Staff in this fun trivia.

Pirate Trivia

4:00 & 8:30 p.m., D Lounge, Deck 4, Midship
 Test your nautical knowledge with your Cruise Staff in this fun Pirate Trivia.

ESPN Monday Night Football Call It!

5:00 p.m., O'Gills Pub (18+), Deck 4, Aft
 Test your Monday Night Football knowledge as you watch some of the greatest highlights of football history and then "make the call" as to what happens next!

Krazy Karaoke

11:00 p.m., The Tube (18+), Deck 4, Aft
 Take to the stage, grab a microphone and sing your favorite song with your Club Host, Max and, DJ Brandon.



Please check your tour tickets for meeting times and locations.
 Visit the Port Adventures Desk, Deck 5, Midship for any questions.

DINNER MENU
 Animator's Palate: Pirate's Menu
 Enchanted Garden: Pirate's Menu
 Royal Court: Pirate's Menu

DRINK OF THE DAY
 Sunken Treasure (Alcoholic)
 Princess Delight (Non Alcoholic)

IMPORTANT NUMBERS
 Fire/Security: 7-3001
 Medical Emergency: 7-3000
 Health Center: 7-1923

FAMILY ACTIVITY HIGHLIGHTS

PICTIONARY

D Lounge, Deck 4, Midship - 2:00 p.m.

Join your Cruise Staff in this fun family event.

CRUISIN' FOR TRIVIA

D Lounge, Deck 4, Midship - 2:45 p.m.

Test your general knowledge with your Cruise Staff in this fun trivia.

PIRATE TRIVIA

D Lounge, Deck 4, Midship - 4:00 & 8:30 p.m.

Test your nautical knowledge with your Cruise Staff in this fun Pirate Trivia.

A PIRATE'S LIFE FOR ME

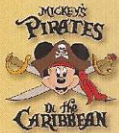
D Lounge, Deck 4, Midship - 6:30 & 9:45 p.m.

Calling all Pirates, we be! If ye have an adventurous spirit or pirate savvy, come spin the "Wheel of Destiny", fer a treasure trove of fun be ripe for the takin' in this action packed pirate game show.

ROB THOMPSON ON GUITAR

Deck 12, Forward - 7:15, 8:15, 9:45 & 11:30 p.m.

Join Rob Thompson as he plays live under the stars!



MICKEY'S PIRATES IN THE CARIBBEAN

Deck Stage, Deck 11, Midship - 7:45 p.m.

It's a Pirate Celebration, me hearties! Come experience all the pirate fun alongside Captain Mickey Mouse and his famous Pirate Crew. Play, dance and acquire all pirate skills needed to become an official member of Mickey's Pirate Crew!



ADULT ACTIVITY HIGHLIGHTS



SENSES SPA SEMINARS

Sunrise Stretch - Senses Fitness Center, 7:00 a.m.

Fab Abs - Senses Fitness Center, 7:30 a.m.

Body Sculpt Boot Camp (Fee Applies) - Senses Fitness Center, 8:00 a.m.

Pathway to Yoga - Senses Fitness Center, 4:00 p.m.



ESPN MONDAY NIGHT FOOTBALL CALL IT!

O'Gills Pub, Deck 4, Aft - 5:00 p.m.

Test your Monday Night Football knowledge as you watch some of the greatest highlights of football history and then "make the call" as to what happens next!

LIVE MUSIC WITH FINE WHINES

La Piazza, Deck 4, Aft - 7:15, 9:30 & 11:15 p.m.

Join Fine Whines as they play live for your listening pleasure in La Piazza this evening.

MIXER

Currents, Deck 13, Forward - 10:00 p.m.

Come meet some of your fellow 18 to 21 year old's and share stories of your cruise thus far, before we head over to the Deck Stage for Buccaneer Blast and Club Pirate.



STORM THE VIBE

Vibe, Deck 4, Forward - 11:45 p.m.

Your chance to hang out in Vibe and party to the wee hours of the morning with your fellow 18 to 21 year old's.

KRAZY KARAOKE

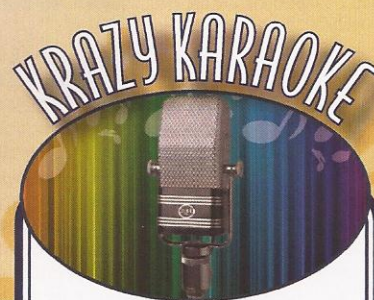
The Tube, Deck 4, Aft - 11:00 p.m.

Take to the stage, grab a microphone and sing your favorite song with your Club Host, Max and DJ Brandon.



It's par for the course for our Guests 12 and older to compete on our special "greens" in this fun tournament.

*Lobby Atrium (12+),
Deck 3, Midship
3:30 p.m.*



Take to the stage, grab a microphone and sing your favorite song with your Club Host, Max and, DJ Brandon.

*The Tube (18+),
Deck 4, Aft
11:00 p.m.*

	8:30	8:45	9:00	9:15	9:30	9:45	10:00	10:15	10:30	10:45	11:00	11:15	11:30	11:45	12:00	12:15	12:30	12:45	1:00	1:15	1:30	
FUNNELVISION	Hunchback of Notre Dame (G) FunnelVision										The Incredibles (G) FunnelVision											
MOVIES	Toy Story 3 (G) DOLBY 3D Buena Vista Theatre																					
CHARACTER																						

FUN FOR ALL AGES	Last Minute Shopping Advice Gangway										Giant Jenga O'Gills Pub											
	Please check your Port Adventure tour tickets for meeting times and locations. Visit the Port Adventures Desk, Deck 5, Midship for any questions.																					

ADULTS	Friends of Bill W. Outlook																										
Vibe											Open House							Chillin' in Vibe									
Edge	Open House																										
Oceaneer Lab	<7:30 a.m. Hangin' in the Lab					Stop the Boat					Human Bingo					Youth Lunch											
Oceaneer Club	Clubhouse Kids										Journey to Neverland												Parachute Games				
Out & About	Open House in Edge																										

	1:45	2:00	2:15	2:30	2:45	3:00	3:15	3:30	3:45	4:00	4:15	4:30	4:45	5:00	5:15	5:30	5:45	6:00	6:15	6:30	6:45
FUNNELVISION	Hercules (G) FunnelVision										Peter Pan (G) FunnelVision										
MOVIES	The Help (PG-13) Buena Vista Theatre										Cars 2 (G) DOLBY 3D Buena Vista Theatre >7:26 p.m.										
CHARACTER						Peter Pan					Jake		Mickey		Capt. Jack		Mickey		Goofy		

FUN FOR ALL AGES	Pictionary D Lounge					Cruisin' for Trivia D Lounge					Pirate Trivia D Lounge					chimpanzee Walt Disney Theatre Rating: (G) A Pirates Life For Me D Lounge						
ADULTS	Pathway to Yoga Senses Fitness Center										Fiddlers Green O'Gills Pub											

Vibe											Dodgeball							ESPN Dream Team Draft Day						
Edge	Dodgeball																							
Oceaneer Lab	Super Sloppy Science					Pirate Crafts					Celebrity Heads					Youth Dinner							A Pirates Life For Me	
Oceaneer Club	Open House										Stitch's Adventure												So You Want To Be a Pirate?	
Out & About	Dodgeball																							

	7:00	7:16	7:30	7:45	8:00	8:15	8:30	8:45	9:00	9:15	9:30	9:45	10:00	10:15	10:30	10:45	11:00	11:15	11:30	11:45	12:00	
FUNNELVISION	Muppet Treasure Island (G) FunnelVision										Buccaneer Blast followed by Club Pirate FunnelVision											Pirates of the Caribbean: Curse of the Black Pearl FunnelVision (PG-13)
MOVIES	Cars 2 (G) DOLBY 3D Buena Vista Theatre										Pirates of the Caribbean: On Stranger Tides (PG-13) Buena Vista Theatre DOLBY 3D > 1:16 a.m.											
CHARACTER	Chip & Dale Lobby Atrium					Capt. Hook Dk 4, Midship					Minnie Lobby Atrium											

FUN FOR ALL AGES	Pirate Games Deck Stage		Pirates of the Caribbean Deck Stage		chimpanzee Walt Disney Theatre (G)					A Pirates Life For Me Deck Stage					Buccaneer Blast followed by Club Pirate Deck Stage												
ADULTS	Live Guitar Deck 12, Forward										Live Guitar Deck 12, Forward					Family Karaoke D Lounge					Live Guitar with Rob Thompson Deck 12, Forward					Live Guitar Deck 12, Forward	

ADULTS	NHL (Subject to Satellite Availability) O'Gills Pub										Club 18*21 Mixer Currents					Krazy Karaoke & Guest DJ Alex Metallic The Tube								
ADULTS	Live Music with Fine Whines La Piazza					Live Music with Fine Whines La Piazza										Fine Whines Live La Piazza		Club 18*21 - Storm the Vibe Vibe						
Vibe	Teen AquaDuck					Pump it Up! >11:00pm					Pirate Deck Party							A Pirates Life For Me D Lounge						
Edge	Tween AquaDuck										Pirate Prep.					Pirate Deck Party								
Oceaneer Lab	Animation Cells										Hangin' in the Lab													
Oceaneer Club	Open House										POTC: Tides of Fortune													
Out & About	Gaga Ball										Pluto's PJ Party					Magic Playfloor							Movie Time	
Out & About	Digi Hunt - Meet at Midship Detective Agency, Dk 5																							

Symbol for activities that will be repeated during the cruise

FOLD

Fold along the dotted lines and take me with you so you don't miss any of the fun!

FOLD

IN THE SPOTLIGHT SERIES

OUT & ABOUT SERIES

JUMP UP! SERIES

CLUBHOUSE SERIES

STORYBOOK SERIES

CREATE & INVENT SERIES

TUESDAY, APRIL 24 2012 - ST. MAARTEN

BUENA VISTA THEATRE



12:00 p.m.
Run Time: 1 hr 43 mins
Rating: G



2:30 p.m.
Run Time: 2 hrs 26 mins
Rating: PG-13



5:30 & 8:00 p.m.
Run Time: 1 hr 56 mins
Rating: G



11:00 p.m.
Run Time: 2 hrs 16 mins
Rating: PG-13

Character Appearances

PETER PAN
Lobby Atrium - 4:45 p.m.

JAKE THE NEVERLAND PIRATE
Deck 4, Midship Balcony - 5:00 p.m.

CHIP & DALE
Lobby Atrium - 5:00 p.m.

MICKEY MOUSE
Deck 4, Midship Balcony - 7:00 p.m.

CAPT. JACK SPARROW
Lobby Atrium - 5:15 p.m.

CAPT. HOOK & SMEE
Deck 4, Midship Balcony - 5:30 p.m.

MINNIE MOUSE
Lobby Atrium - 5:30 p.m.

GOOFLY
Lobby Atrium - 6:00 p.m.

DAISY DUCK
Lobby Atrium - 9:30 p.m.

DONALD DUCK
Lobby Atrium - 9:30 p.m.

For details of daily Disney character appearances, refer to the character line on your Navigator Grid, or the digital character board in the Lobby Atrium.

YOUTH ACTIVITIES THEMED EXPERIENCES

- CLUBHOUSE SERIES** focuses on movement and features content which appeals to younger children.
- STORYBOOK SERIES** is designed with a strong connection to the Disney classic stories.
- JUMP UPI SERIES** includes large ground games & movement-oriented activities.
- CREATE & INVENT SERIES** will have a tactile focus allowing children to create and admire their work.
- IN THE SPOTLIGHT SERIES** focuses on children's stage presence with lots of activities and enthusiasm.
- SOLVE IT! SERIES** are less active, but will challenge children with problem/solutions-based activities.
- OUT & ABOUT SERIES** Set outside secured Youth Activities spaces, very active, appealing to Tweens. Recommended 8 - 14 years

SHIP DIRECTORY

YOUTH ACTIVITIES	
DISNEY'S OCEANEER CLUB	9:00 A.M. - 12:00 MID.
DISNEY'S OCEANEER LAB	7:30 A.M. - 11:00 P.M.
EDGE	10:00 A.M. - 1:00 A.M.
IT'S A SMALL WORLD NURSERY	7:30 A.M. - 11:00 P.M.
VIBE	1:00 P.M. - 11:45 P.M.
RECREATION	
AQUADUCK	9:00 A.M. - 8:00 P.M.
	10:45 P.M. - 12:00 MID.
AQUALAB	8:00 A.M. - 7:30 P.M.
DONALD'S POOL	8:00 A.M. - 5:30 P.M.
GOOFLY GOLF	8:00 A.M. - 10:00 P.M.
GOFL SPORTS SIMULATORS	9:00 A.M. - 6:00 P.M.
GOOFLY'S SPORTS DECK	8:00 A.M. - 6:00 P.M.
MICKEY'S POOL	6:00 A.M. - 5:30 P.M.
MICKEY'S SLIDE	9:00 A.M. - 6:00 P.M.
MIDSHIP DETECTIVE AGENCY	DECKS 2 & 5, MID
NEMO'S REEF	DECK 11, MID
PORT ADVENTURES DESK	DECK 5, MID
QUIET COVE POOL	DECK 11, FWD
SATELLITE FALLS	DECK 13, FWD
SENSES FITNESS CENTER	DECK 11, FWD
	6:00 A.M. - 6:30 P.M.
	6:30 A.M. - 10:00 P.M.
GENERAL INFORMATION	
ARR-CADE	24 HOURS
DISNEY VACATION CLUB DESK	5:00 P.M. - 10:00 P.M.
GUEST SERVICES	24 HOURS
FUTURE CRUISE SALES DESK	DECK 4, MID
	4:00 P.M. - 6:00 P.M.
	7:30 P.M. - 8:30 P.M.
	9:30 P.M. - 10:30 P.M.
MEDICAL HEALTH CENTER	DECK 1, FWD
	9:30 A.M. - 11:00 A.M.
	4:30 P.M. - 7:00 P.M.
PORT & SHOPPING DESK	DECK 4, MID
PRELUDES	DECK 3, FWD
	5:45 P.M. - 6:30 P.M.
SENSES SPA AND SALON	DECK 11, FWD
SHUTTERS	DECK 4, MID
SHUTTERS DIGITAL	DECK 4, MID
	8:00 P.M. - 10:00 P.M.
	5:00 P.M. - 10:30 P.M.
	24 HOURS
SHOPPING	
BIBBIDI BOBBIDI BOUTIQUE	DECK 5, MID
	PIRATES LEAGUE
	9:00 A.M. - 9:00 P.M.
MICKEY'S MAINSAIL	DECK 3, FWD
SEA TREASURES	DECK 3, FWD
VISTA GALLERY	DECK 4, MID
WHITECAPS	DECK 3, FWD
	7:30 P.M. - 11:00 P.M.

DINNER Animator's Palate: Pirate's Menu
Enchanted Gardens: Pirate's Menu
Royal Court: Pirate's Menu
Dining Times: 5:45pm & 8:15pm

DRINK OF THE DAY Simple Treasure (Alcoholic)
Princess Delight (Non Alcoholic)

WEATHER FORECAST Tuesday: Partly Cloudy
High: 80°F/28°C
Wednesday: Partly Cloudy
High: 78°F/26°C

Evening Attire: Pirate/Cruise Casual

DINING & LOUNGES

BREAKFAST

CABANAS CONTINENTAL	DECK 11, AFT	6:30 A.M. - 7:00 A.M.
CABANAS	DECK 11, AFT	7:00 A.M. - 10:30 A.M.
ENCHANTED GARDEN	DECK 2, MID	7:30 A.M. - 10:30 A.M.
ROYAL COURT	DECK 3, MID	7:30 A.M. - 9:30 A.M.

LUNCH

CABANAS	DECK 11, AFT	12:00 P.M. - 2:00 P.M.
FILMORE'S FAVORITES	DECK 11, MID	11:00 A.M. - 6:00 P.M.
LUIGI'S PIZZA	DECK 11, MID	11:00 A.M. - 6:00 P.M.
ROYAL COURT	DECK 3, MID	12:00 P.M. - 1:30 P.M.
TOW MATER'S GRILL	DECK 11, MID	11:00 A.M. - 11:00 P.M.

DINNER

ANIMATOR'S PALATE	DECK 3, AFT	5:45 P.M. & 8:15 P.M.
ENCHANTED GARDEN	DECK 2, MID	5:45 P.M. & 8:15 P.M.
ROYAL COURT	DECK 3, MID	5:45 P.M. & 8:15 P.M.
CABANAS TABLE SERVICE	DECK 11, AFT	6:30 P.M. - 8:30 P.M.

LATE NIGHT SNACKS

CABANAS PIRATE BUFFET	DECK 11, AFT	10:30 P.M. - 11:15 P.M.
LUIGI'S PIZZA	DECK 11, MID	9:30 P.M. - 12:30 A.M.

ADDED FEATURES

BEVERAGE STATION	DECK 11, MID	24 HOURS
EYE SCREAM	DECK 11, MID	11:00 A.M. - 11:00 P.M.
ROOM SERVICE	DIAL O	24 HOURS

ENTERTAINMENT - LOUNGES - BARS

Adults must be 21 and older to consume alcoholic beverages.

BON VOYAGE	DECK 3, MID	3:00 P.M. - 10:30 P.M.
COVE BAR (18+)	DECK 11, FWD	11:00 A.M. - 12:00 MID.
COVE CAFE (18+)	DECK 11, FWD	7:00 A.M. - 12:00 MID.
CURRENTS (18+)	DECK 13, FWD	1:00 P.M. - 12:00 MID.
D LOUNGE	DECK 4, MID	SHOW TIMES
FROZONE	DECK 11, MID	11:00 A.M. - 11:00 P.M.
LA PLAZZA	DECK 4, AFT	5:00 P.M. - 12:00 MID.
MERIDIAN (18+)	DECK 12, AFT	5:00 P.M. - 12:00 MID.
O'GILLS PUB	DECK 4, AFT	3:00 P.M. - 12:00 MID.
OOH LA LA (18+)	DECK 4, AFT	5:00 P.M. - 12:00 MID.
OUTLOOK	DECK 14, MID	
SKYLINE (18+)	DECK 4, AFT	5:00 P.M. - 12:00 MID.
THE TUBE (18+)	DECK 4, MID	10:00 P.M. - 2:00 A.M.
VISTA CAFE	DECK 4, MID	7:30 A.M. - 10:30 P.M.
WAVES	DECK 12, AFT	10:30 A.M. - 11:00 P.M.

Consumers who order raw or partially cooked, ready-to-eat food of animal origin, are hereby informed that the food is not sufficiently cooked to ensure its safety.



IMPORTANT INFORMATION

Please check your tour tickets for meeting times and locations. Visit the Port Adventures Desk, Deck 5, Midship, for any questions.

All Ashore: Approx. 8:00 a.m.
All Aboard: 6:30 p.m.

SHIP'S AGENT IN ST. MAARTEN IMPORTANT NUMBERS
S.E.L. Maduro and Sons, Inc. (WT), Fire/Security: 7-3001
P.O. Box 63, Philipsburg, St. Maarten, N.A. Medical Emergency: 7-3000
Tel.: 599.542.2472 or 599.542.3408 Health Center: 7-1923

YOUTH ACTIVITIES HIGHLIGHTS

DINE & PLAY

A convenience for families dining at 8:15 p.m., our Youth Activities Counselors will be available at 9:15 p.m. at the entrance of Royal Court, Enchanted Garden and Animator's Palate dining rooms to bring registered children to join the fun in the Youth Activity areas.

CLUBHOUSE KIDS

Is a structured play time offered during secured programming, and is recommended for children ages 3-7. During Clubhouse Kids time in the Oceaneer Club, Counselors will be able to interact and encourage the youngest cruisers in specific activities, ensuring they are engaged.



Deck 5 Midship (7-1440) 9:00 a.m. - 12:00 mid.
(3 - 12 years old)

JOURNEY TO NEVERLAND

9:15 a.m.

Join Peter Pan as he takes you on an adventure on the Magic Playfloor.

LITTLE EINSTEIN'S

1:45 p.m.

Your junior cruiser will have the time of their lives with this program inspired by their favorite show with fun activities guaranteed to make them feel like a little genius!



Deck 5 Midship (7-1445) 7:30 a.m. - 11:00 p.m.
(3 - 12 years old)

SUPER SLOPPY SCIENCE - GASSES & GOOS

1:45 p.m.

Join Professor Make-O-Mess in some of the most extreme experiments you will ever see in the world of Super Sloppy Science!

STITCH'S ADVENTURE SQUAD

3:30 p.m.

Stitch, everyone's favorite alien, is making an appearance to share some of his mischievous games and activities.



Deck 13 Midship (41-14426) 10:00 a.m. - 1:00 a.m.
(11 - 14 years old)

A PIRATES LIFE FOR ME

11:45 p.m. - D Lounge

Calling all Pirates, we be! If ye have an adventurous spirit or pirate savvy, come spin the "Wheel of Destiny", for a treasure trove of fun be ripe for the takin' in this action packed pirate game show.



Entrance on Deck 4 Forward (7-9418)

1:00 p.m. - 11:45 p.m.

12:15 a.m. - 2:00 a.m. - Oceaneer Lab
(14 - 17 years old)

ESPN DREAM TEAM DRAFT DAY

6:00 p.m.

Play ball! Join the "Commissioner" and engage in this interactive fantasy baseball draft unlike anything you've ever seen! Can YOU draft the greatest baseball team of All-Time?

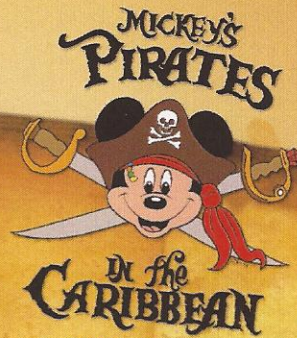
INVADE THE LAB

12:15 a.m. - 2:00 a.m. - Oceaneer Lab

Join your fellow teen cruisers as we invade the Lab.

YOUTH ACTIVITIES OPEN HOUSE

Open House is an opportunity for all to come and participate in a variety of exciting activities and free time in the Oceaneer Club, Lab, Edge and Vibe throughout the cruise. During these times secured programming will still be offered in the other venue for those looking to check their children into care.



7:45 - 8:05 pm
Pirate Games start at 7:30 p.m.
Deck Stage

It's a Pirate Celebration, me hearties!
Come experience all the pirate fun alongside Captain Mickey Mouse and his famous Pirate Crew.
(Weather Permitting)

Buccaneer Blast Fireworks

What's a pirate party without some fireworks to remind the other ships who be ruling the oceans blue?

10:30 pm
Deck Stage

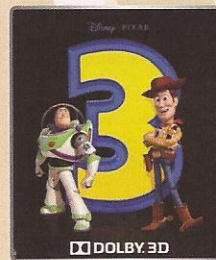
Fireworks will be on display Starboard side
Seen best from Deck 11, center pool area, and on Deck 12.

Club Pirate

If ye be a fan of Pirates of the Caribbean, tis time to revel in the night at the hottest dance club in all the seven seas with Guest DJ Alex Metallic
(Immediately following Buccaneer Blast)

BUENA VISTA THEATRE

Today's Movies

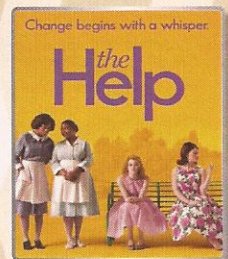


DOLBY 3D

12:00 p.m.

Run Time: 1 hr 43 mins

Rating: G



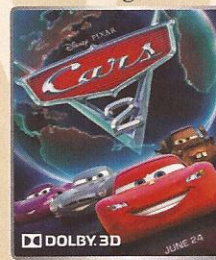
Change begins with a whisper

the Help

2:30 p.m.

Run Time: 2 hrs 26 mins

Rating: PG-13

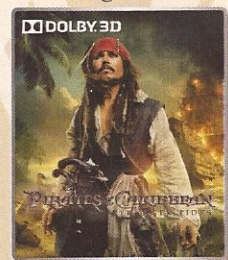


DOLBY 3D

5:30 & 8:00 p.m.

Run Time: 1 hr 56 mins

Rating: G



DOLBY 3D

11:00 p.m.

Run Time: 2 hrs 16 mins

Rating: PG-13

MORE TO ENJOY WHILE ONBOARD

ONBOARD AIRLINE CHECK IN

If you would like to have your boarding passes printed for you onboard and have your luggage taken to the airport for you, by midnight tomorrow, is the last chance to enroll. If you have Disney Cruise Line airport transfer to Orlando International Airport and fly with one of the participating airlines. Please stop at Guest Services, Deck 3, Midship.



DISNEY VACATION CLUB®

Want to learn more about taking magical vacations year after year? Please see a Disney Vacation Club representative on Deck 4, Mid-Ship, or call 7-2805 from your stateroom phone for more information about our interactive group presentation.



PORT & SHOPPING INFORMATION

Shopping Guides Johan & Marissa will be on the gangway from 8:00 to 9:00 a.m. to answer any last minute St. Maarten shopping questions. Make sure to bring your Shopping Maps, VIP Cards & Shopping Coupons!

SURF @ SEA

\$0.75 per minute, or save money by buying blocks of time. \$55.00 for 100 minutes, \$100.00 for 250 minutes and \$150.00 for 500 minutes. Wireless information sheets are available at Guest Services, Deck 3, Midship. *Please note: Due to satellite connectivity, onboard internet service will be noticeably slower than you may be accustomed to and may at times be interrupted or unavailable.*

ON DEMAND TV

Watch Disney movies, Hollywood features, ABC Shows, and even captioned content, plus much more "On Demand" for **FREE** in the comfort of your stateroom! Bookmark your movie and come back to watch it later. Press MENU on your stateroom television remote control, and follow the prompts.



Welcome to the beautiful island paradise of St. Maarten. Your friendly and knowledgeable Port Adventures team is available for you to make some last minute bookings for today. Let us take care of everything from relaxing beach tours to fun and exciting snorkeling tours around the island of St. Maarten.

Tomorrow is St. Thomas so don't forget to reserve space on one of our hassle free and exciting tours. Visit the Port Adventures Desk, located, Deck 5, Midship, and our team will assist in choosing the right tour for you and your family.

SHOPPING

PIRATE PARTY GEAR

Arrrgh... It's time to embrace your inner pirate! Make your way to Mickey's Mainsail, Deck 3, Forward, to find a treasure trove of Pirate gear! Everything from costumes and apparel to hats and accessories.

SOPHIA FIORI DIAMOND

Want to be unique and individual? Stop in Whitecaps to meet "Diamond Jeff" and try on the world's most memorable white diamond pieces and commemorate your cruise. Ask the hosts about 50% savings off US retail prices. Whitecaps, Deck 3, Forward.

BRAND NAME WATCHES

We have the hottest brands in watches: Fossil, Kenneth Cole, Guess, and DKNY for you to choose from. Available in Whitecaps, Deck 3, Forward.

FANTASY INAUGURAL SAILINGS

Bring home a memory of the Fantasy's Inaugural sailings. Limited time only. Choose from tees, hats, sweatshirts, mugs and scrapbooks. Sea Treasures, Deck 3, Forward.

SWAROVSKI BOXED

Stop in Whitecaps to see the sparkling crystal fashion jewelry that is clean, simple and beautiful. Turn the ordinary into extraordinary!

CHAMILIA

Head to Whitecaps to design, create and personalize your own Chamilia bracelet. Choose from a selection of Sterling Silver beads with many of them featuring your favorite Disney Characters!




SALON TASTER SPECIAL

- Scalp Massage
- European Facial
- Hand Treatment
- Sunglow Makeover
- Conditioning Hair Treatment
- Eye Collagen Treatment
- Foot & Ankle Massage
- Neck & Shoulder Massage

Three for 99.00
Five for 119.00
All Eight for 139.00


PIRATE'S LEAGUE

Come and join Captain Jack Sparrow's crew and get your piratical transformation, when pirates ransack the Bibbidi Bobbidi Boutique. Learn how to be a true and honest pirate! Located on Deck 5, Midship, across from the Port Adventures Desk.



Shutters CAMERA OF THE DAY

Olympus TG310, ONLY \$174.95, 14 Megapixels, waterproof, shockproof & dust proof. The Perfect beach camera!



**Please note that photos are available for viewing on our interactive photo kiosks approximately five hours after being taken and are only available for purchase during this cruise.*

Due to port regulations, when the ship is docked, the stores will remain closed.

IMPORTANT INFORMATION

Security Notice

All Guests (including children) who wish to disembark the ship are required to present their Key to the World card at the gangway. A photo ID is also required for those Guests who are 18 years of age or older. Guests under the age of 18 are required to have a Parent, Guardian or other responsible adult sign an authorization form at the time it is given out if they wish to go ashore unaccompanied. Authorization forms are available at the gangways and Guest Services.

Please Note:

Please remember to use plenty of sunscreen & mosquito/ Insect repellent when venturing ashore.

Cold and Flu Reminder

Please wash hands frequently and thoroughly, particularly before meals. Contact the Health Center by dialing 7-1923, should anyone in your party become ill.

Corridor Quiet Hours

As a courtesy to all our Guests, please recognize quiet hallway hours from 10:00 p.m. til 8:00 a.m.

Inclement Weather

For the safety of all Guests, outdoor events may be changed due to unforeseen weather conditions.

Environmental Message

With Disney's commitment to the Environment, please refrain from throwing anything over the Ship's side. Thank you!

No Reserved Seats Policy

As a courtesy to all our Guests, we kindly advise that the saving of seats is not permitted in the Walt Disney Theatre, and the saving of the sun loungers is not permitted on Deck 11, 12, and 13. Items left unattended will be returned to lost and found at Guest Services, Deck 3 Midship.

Smoking

For the comfort of our guests the following areas are designated as Smoking areas: - Promenade Deck (Deck 4), smoking is permitted Port Side, Aft only from 6:00 p.m. to 6:00 a.m.
- Currents - Deck 13, Forward, Port Side.
- Meridian Bar - Deck 12, Aft, Port Side, outside.
- Smoking is permitted on stateroom verandahs.
- Smoking is prohibited inside all guest staterooms. Guests found smoking in their staterooms will be charged a \$250 stateroom recovery fee.

Walt Disney Theatre

Theatrical performances may use artificial fog, strobe lights, pyrotechnics and other special effects. For the safety of our performers and the comfort of those around you, the use of any photography, video recording device or any electronic equipment is prohibited.

Verandah Safety

Please do not leave any combustible materials on your balcony when not present in your stateroom for safety reasons.